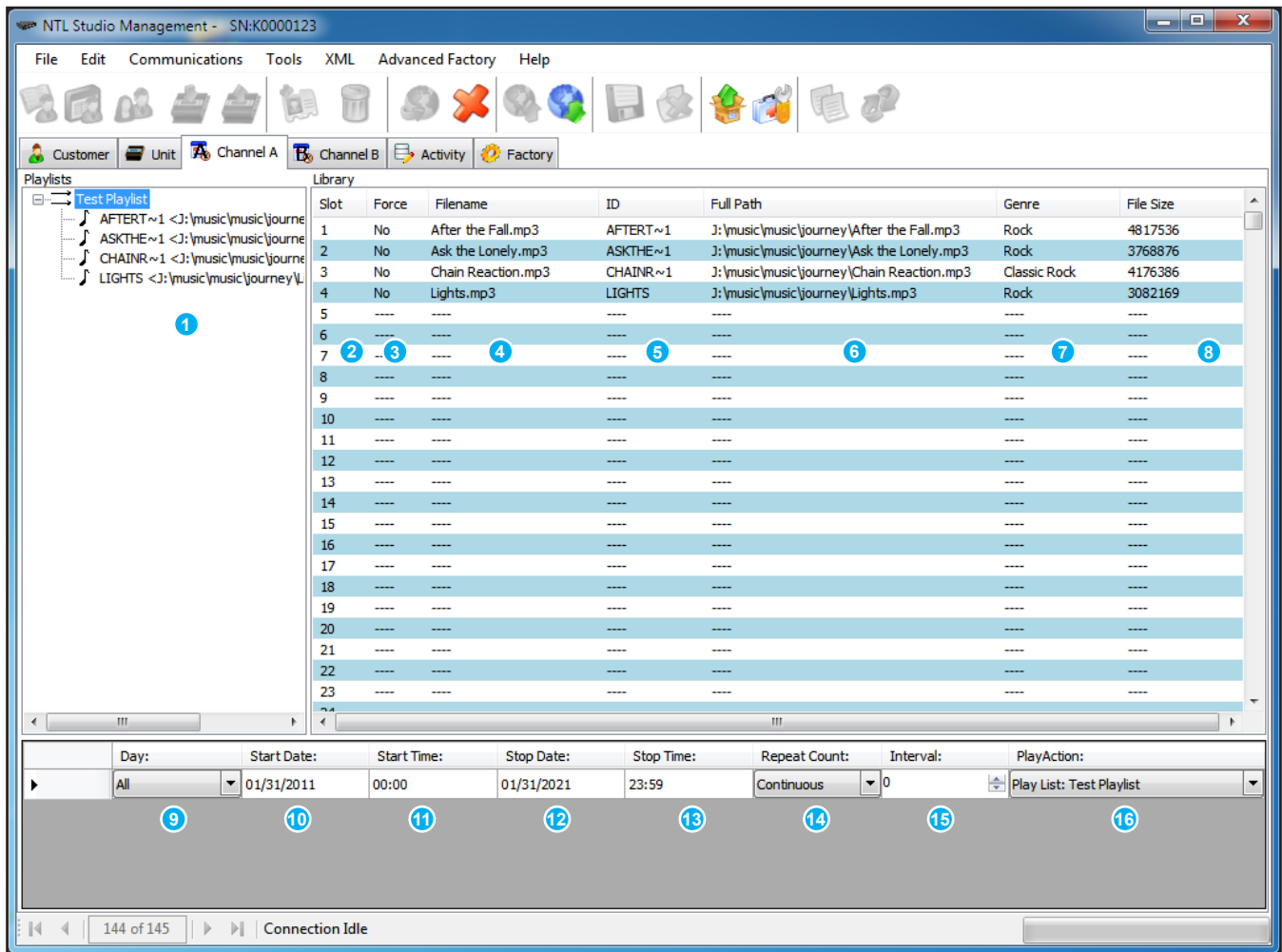


Channel A & Channel B for iLink:



1. Playlists (Playlists) - Name assigned to play list will associated audio files.
2. Slot (Library) - Slot assigned to audio file. **NEW FEATURE**
3. Force (Library) - When selected the message is always reloaded. **NEW FEATURE**
4. Filename (Library) - Name of file.
5. ID (Library) - ID assigned to file by NTL Studio.
6. Full Path (Library) - Path to file on local or mapped drive.
7. Genre (Library) - Genre ID3 tag. **NEW FEATURE**
8. File Size (Library) - Size of file.
9. Day (Schedule) - Day schedule will be active.
10. Start Date (Schedule) - Start day of schedule.
11. Start Time (Schedule) - Start time of schedule.
12. Stop Day (Schedule) - Stop day of schedule.
13. Stop Time (Schedule) - Stop time of schedule.
14. Repeat Count (Schedule) - Amount of times files in Play Action will play.
15. Interval - Time (in seconds) between each message.
16. Play Action - Set to play BGM feed through, playlist or individual audio file.