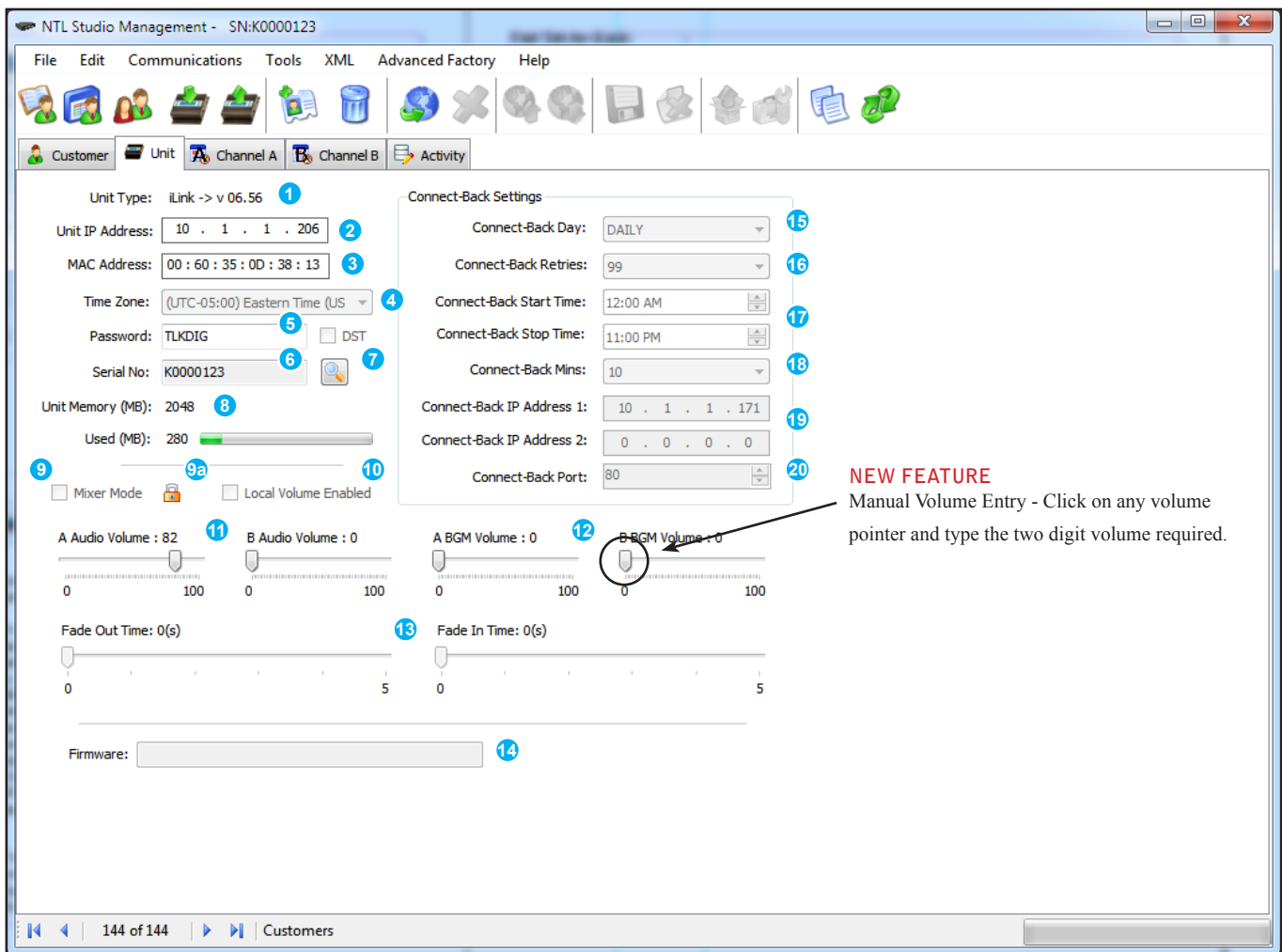


Unit Tab for iLink:



1. Unit Type - Display type of unit and firmware version.
2. Unit IP Address - Displays current IP address.
3. MAC Address - Displays MAC address.
4. Time Zone - Displays current and time zone and Daylight Savings status.
5. Password - Displays current password.
6. Serial Number - Displays current unit serial number.
7. Serial Number Search - Allows search of database by serial number. **NEW FEATURE**
8. Unit Memory - Displays current unit memory size and used memory.
9. Mixer Mode - Enables Mixer Mode. **NEW FEATURE**
- 9a. Volume Sliders Lock - Locks volume sliders together (Mixer Mode Only). **NEW FEATURE**
10. Local Volume Enabled - Enables local volume control (using front buttons).
11. Audio Volume - Controls the audio volume of Output A & Output B.
12. BGM Audio Volume - Control the audio volume of the BGM feed-through inputs.
13. Fade In/Out Time - Displays current fade in/out times between BGM and internal files.
14. Firmware - Displays current path to firmware update.
15. Connect-Back Day - Sets day(s) to Connect-Back.
16. Connect-Back Retries¹ - Number of Connect-Back attempts in case of communication failure.
17. Connect-Back Start/Stop Time - Start/Stop time of Connect-Back.
18. Connect-Back Mins² - Frequency of Connect-Backs during valid Connect-Back start and stop time.
19. Connect-Back IP Addresses - Displays current Connect-Back IP addresses.
20. Connect-Back Port - Port number unit will use to connect to server.

¹ Each retry has a 60 second wait between attempts. If all Retries fail the unit will try to Connect-Back on the next scheduled day/time, or per the "Connect-Back Mins" setting.

² If set to "0" unit will attempt to connect at the Connect-Back Start Time; if set for a time other than "0" the unit will Connect-Back at the Start Time then again at the set interval until the Stop Time is reached.